



Summer 2021 Student Perceptions of Instruction: Response Rates by College and University Overall

Report by Drew Whittington
Office of Institutional Effectiveness

Purpose

The purpose of this report is to provide a quick and concise presentation of response rates and scores for student perceptions of instruction (SPI) by college for summer 2021. The document contains histograms displaying the distribution of scores for each college, as well as the university's overall score and response rate (49%). Also listed are overall means, standard deviations (SD), and medians for each college.

Calculations

For each college, scores were averaged across items to indicate an overall mean score for each response. Then, histograms were created to display the distribution of overall mean scores for each college. Because items were averaged, and resulting scores were not whole numbers, the distributions graphs scores are in-between typical scores of 1-5 (Scale: 5 = Excellent, 4 = Very Good, 3 = Good, 2 = Fair, 1 = Poor). Therefore, the resulting labels indicate the number of scores with values of 1, 1.01 to 2, 2.01 to 3, 3.01 to 4, and 4.01 to 5.

Table 1: Allied Health Professionals

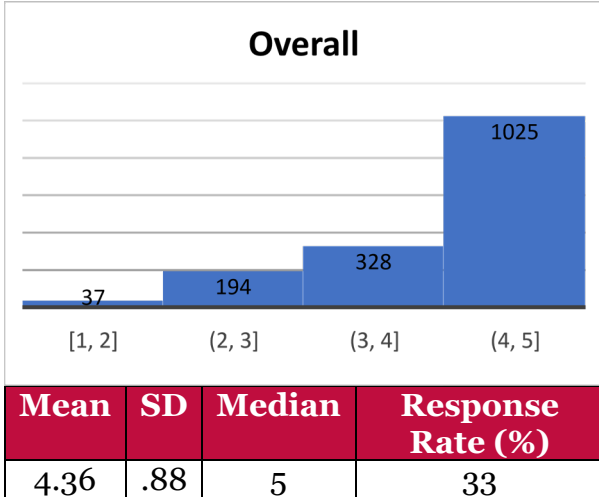


Table 2: College of Arts and Sciences

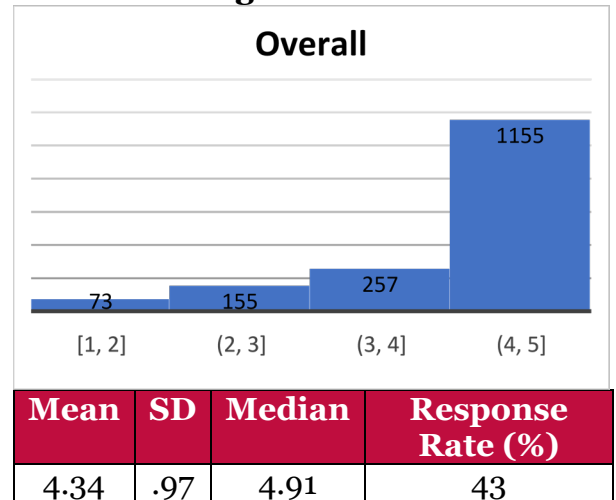


Table 3: College of Business

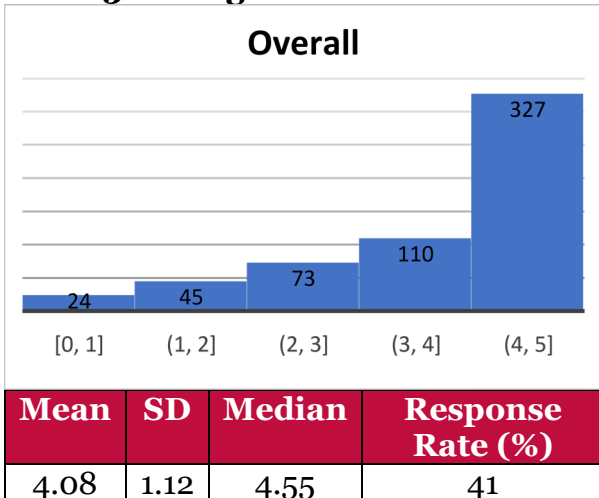


Table 4: Education/Professional Studies

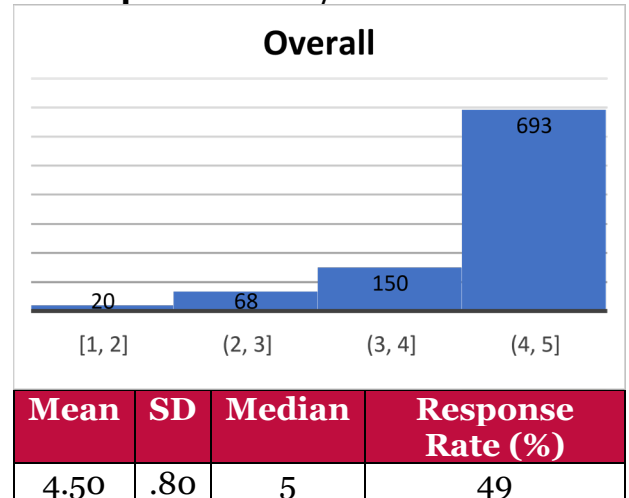
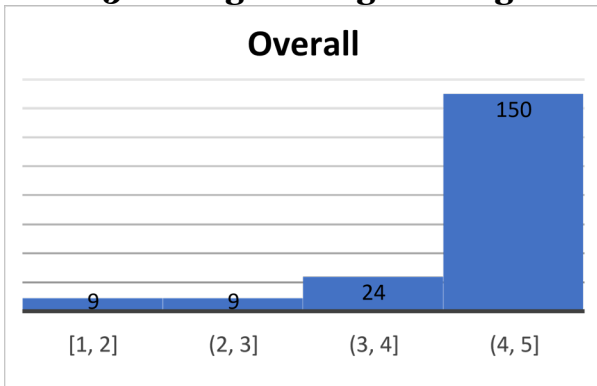
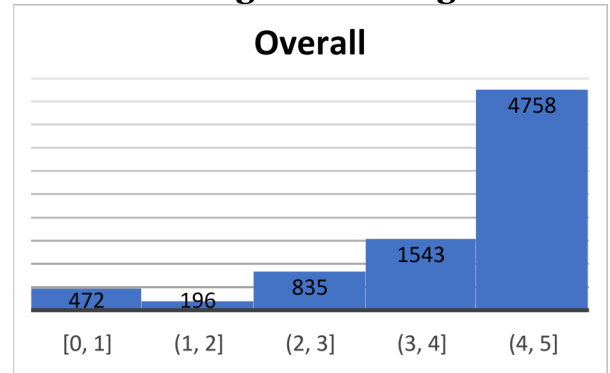


Table 5: College of Engineering



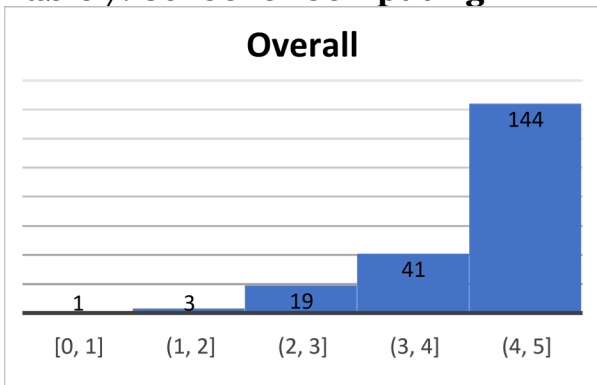
Mean	SD	Median	Response Rate (%)
4.50	.89	5	57

Table 6: College of Nursing



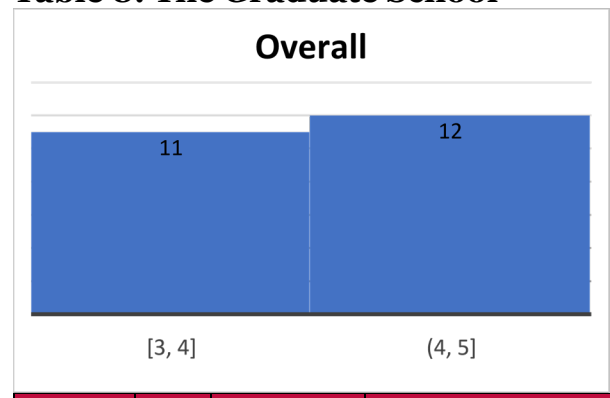
Mean	SD	Median	Response Rate (%)
4.35	.89	5	60

Table 7: School of Computing



Mean	SD	Median	Response Rate (%)
4.44	.82	5	47

Table 8: The Graduate School



Mean	SD	Median	Response Rate (%)
4.25	.60	4.40	47

Table 9: Honors College

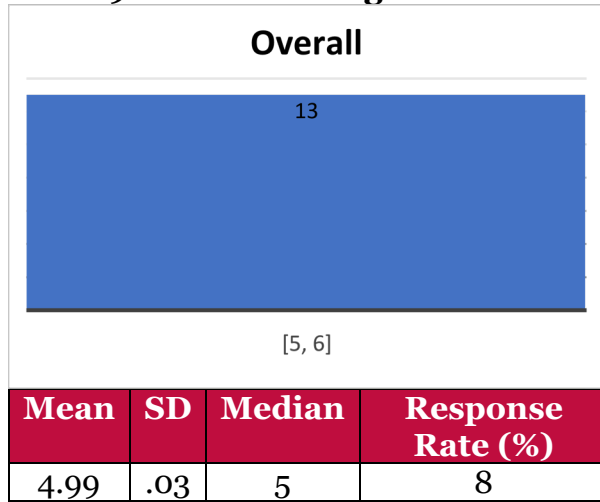


Table 10: University Overall

