



# UNIVERSITY OF SOUTH ALABAMA

## **Summer 2022 Student Perceptions of Instruction: Response Rates by College and University Overall**

Report by Michaela Rader  
Office of Institutional Effectiveness

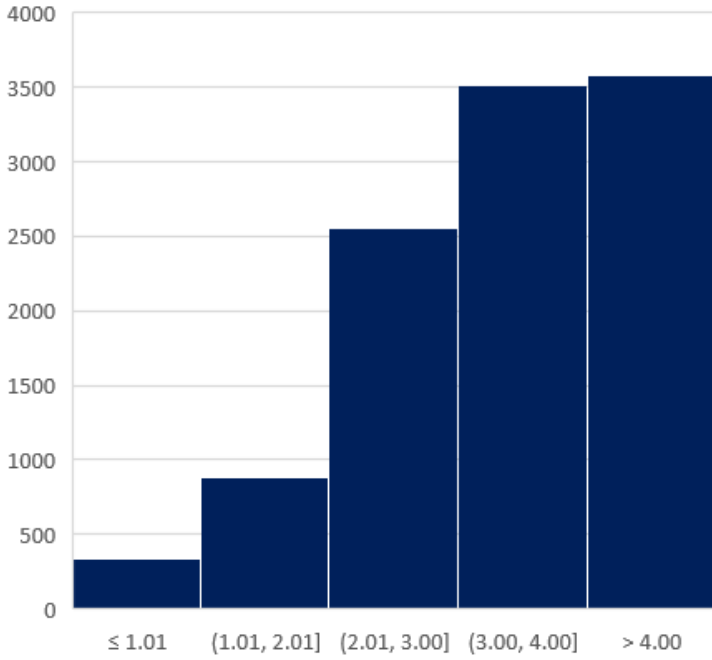
## Purpose

The purpose of this report is to provide a quick and concise presentation of response rates and scores for student perceptions of instruction (SPIs) by college for summer 2022. The document contains histograms displaying the distribution of scores for each college, as well as the university's overall score and response rate (56%). Also listed are overall means, standard deviations (SD), and medians for each college.

## Calculations

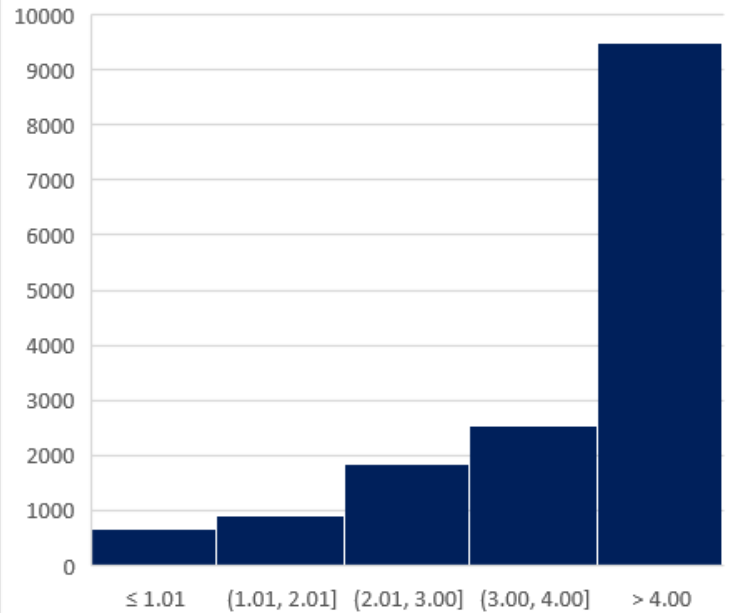
For each college, scores were averaged across items to indicate an overall mean score for each response. Then, histograms were created to display the distribution of overall mean scores for each college. Because items were averaged, and resulting scores were not whole numbers, the distributions graphs scores are in-between typical scores of 1-5 (Scale: 5 = Excellent, 4 = Very Good, 3 = Good, 2 = Fair, 1 = Poor). Therefore, the resulting labels indicate the number of scores with values of 1, 1.01 to 2, 2.01 to 3, 3.01 to 4, and 4.01 to 5.

**Table 1: Allied Health Professionals**



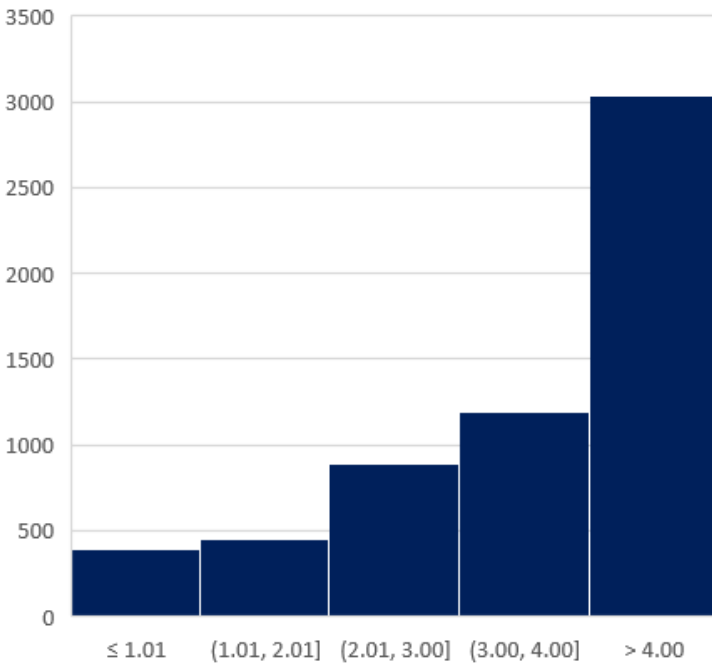
Mean	SD	Median	Response Rate (%)
4.25	1.02	5.00	64%

**Table 2: College of Arts and Sciences**



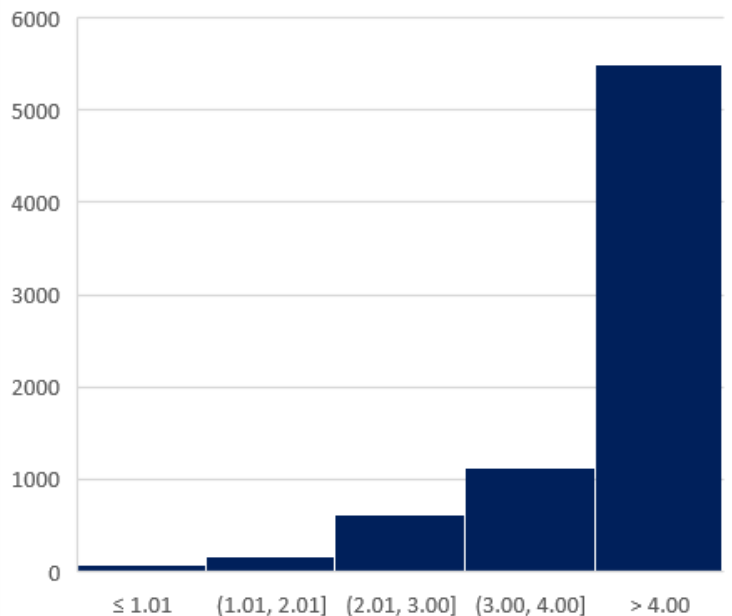
Mean	SD	Median	Response Rate (%)
4.25	1.14	5.00	39%

**Table 3: College of Business**



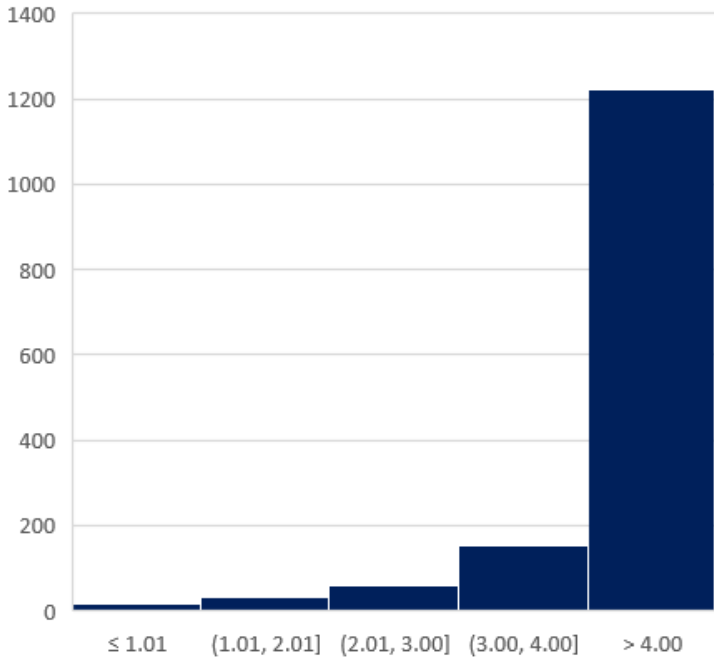
Mean	SD	Median	Response Rate (%)
4.01	1.24	5.00	41%

**Table 4: College of Education and Professional Studies**



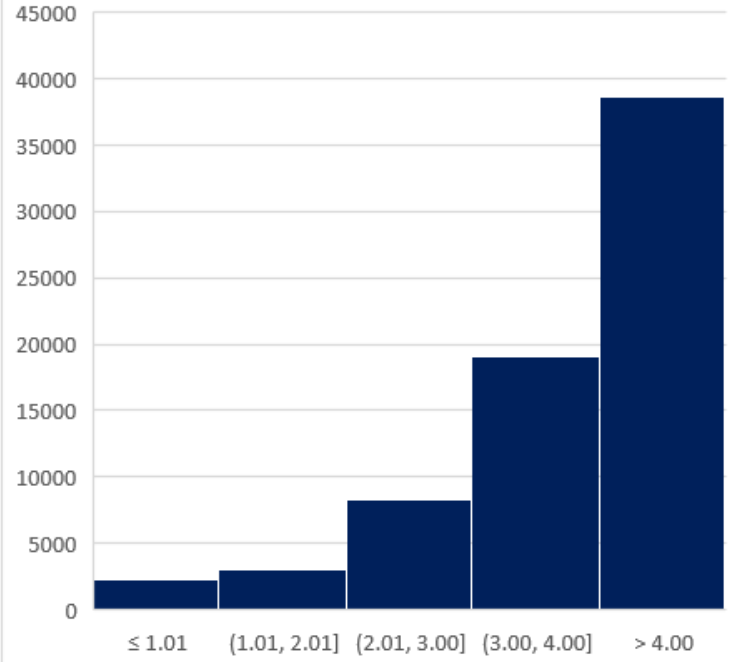
Mean	SD	Median	Response Rate (%)
4.25	1.14	5.00	49%

**Table 5: College of Engineering**



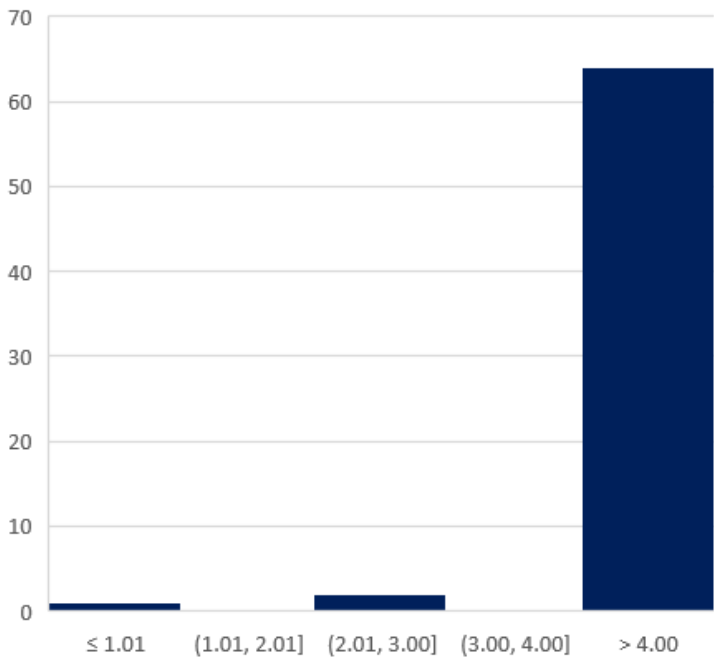
Mean	SD	Median	Response Rate (%)
4.71	0.75	5.00	71%

**Table 6: College of Nursing**



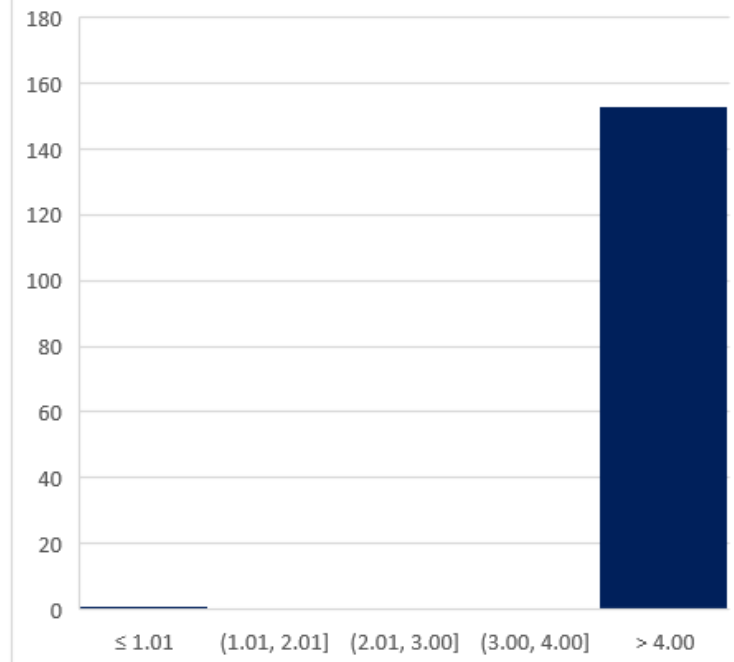
Mean	SD	Median	Response Rate (%)
4.25	1.03	5.00	71%

**Table 7: The Graduate School**



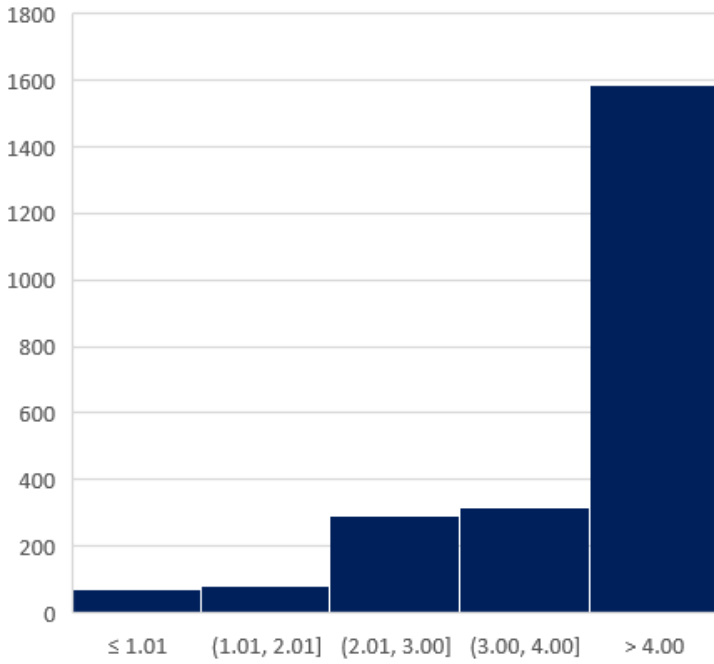
Mean	SD	Median	Response Rate (%)
4.94	0.35	5.00	75%

**Table 8: Honors College**



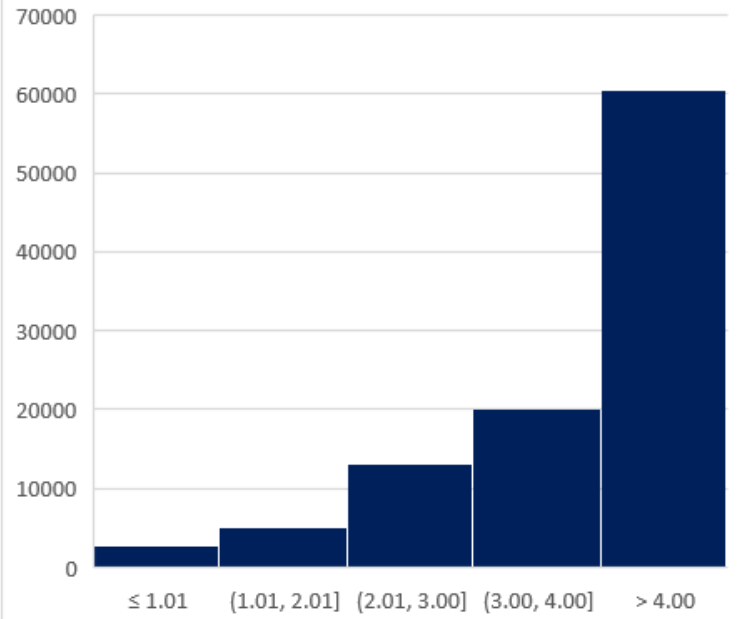
Mean	SD	Median	Response Rate (%)
5.00	0.00	5.00	33%

**Table 9: School of Computing**



Mean	SD	Median	Response Rate (%)
4.40	1.02	5.00	52%

**Table 10: University of South Alabama Overall**



Mean	SD	Median	Response Rate (%)
4.29	1.04	5.00	56%